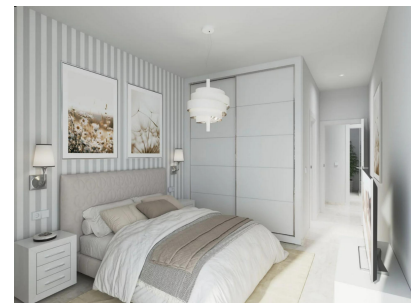


2 bedroom Apartment with terrace in Puerto de Mazarron

Ref: MVS-477

281,000€



Sales type :	New build
Year built :	2024
Energy certificate :	Coming soon
Bedrooms :	2
Bathrooms :	2

swimming pool :	communal
Garden :	private garden
Orientation :	N/A
Views :	sea view
Parking :	underground parking space

House area :	68m ²
Terraces area :	73m ²
Airport :	135 km
Beach :	200 m
City :	500 m
Golf :	35 km

complete air conditioning installation

all kitchen appliances

built-in wardrobes

Residencial Perla Playa 2 boasts spectacular views of the Mediterranean Sea. 12 properties with a choice of 2 and 3 bedroom apartments. The ground floor apartments have a terrace with garden, the apartments on the first floor have a terrace & roof terrace.

The new complex is located in one of the new neighborhoods near Playa El Alamillo of Puerto de Mazarrón. On the one side beautiful views of the massive mountain ranges, on the other side of the Mediterranean Sea. Puerto de Mazarron is a lively, authentic Spanish seaside resort, with all imaginable amenities, such as supermarkets, restaurants and the beautiful Boulevard where you can stroll in the evening